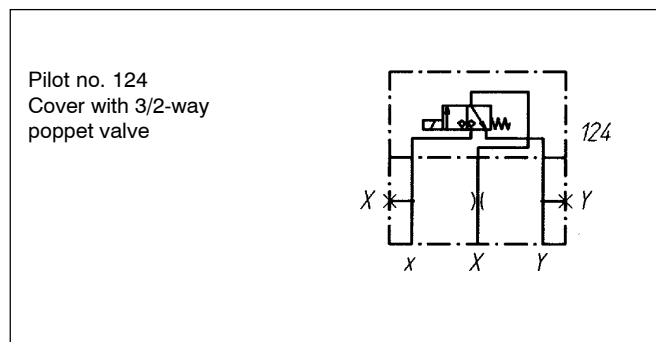
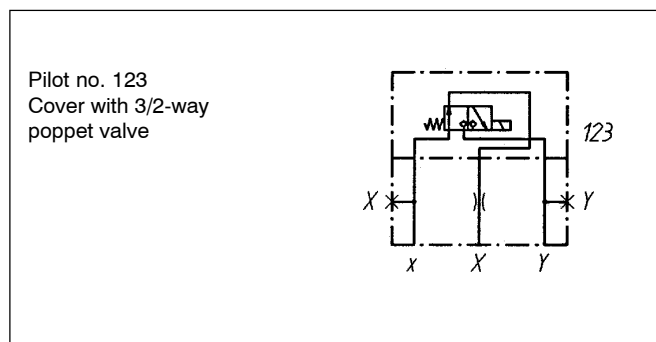
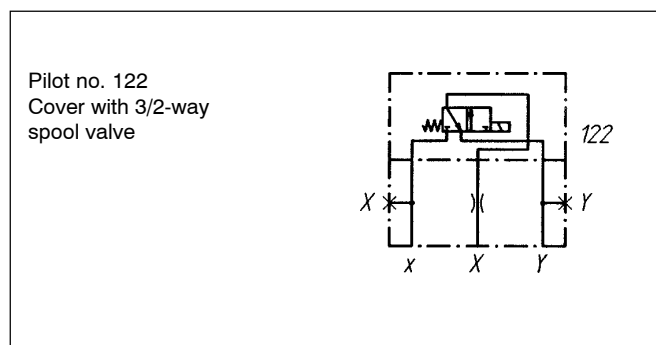
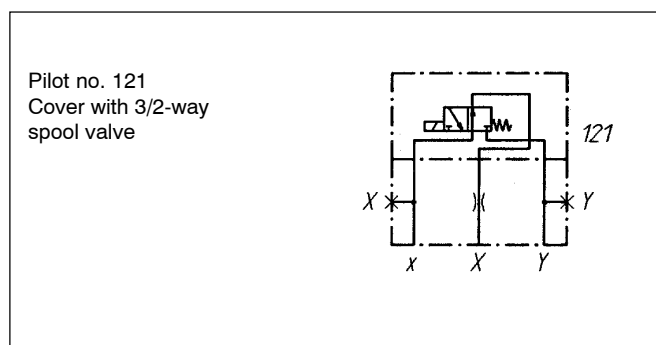
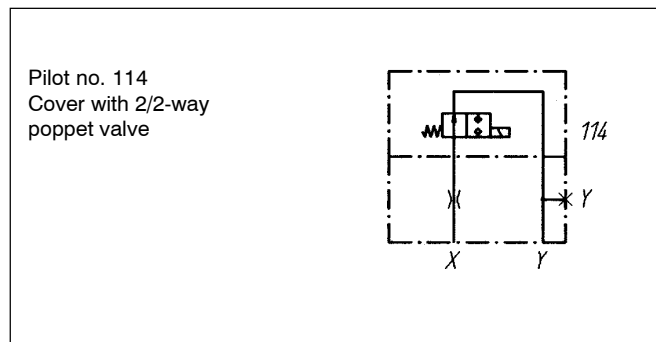
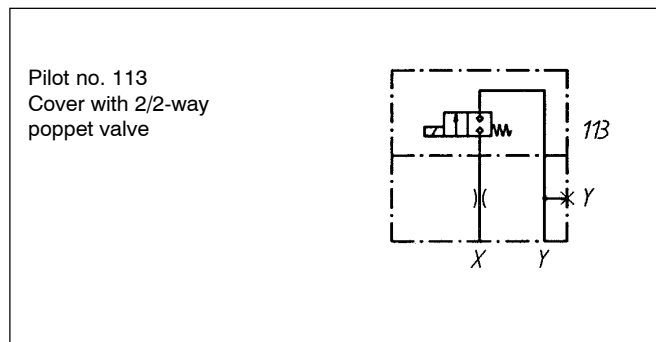
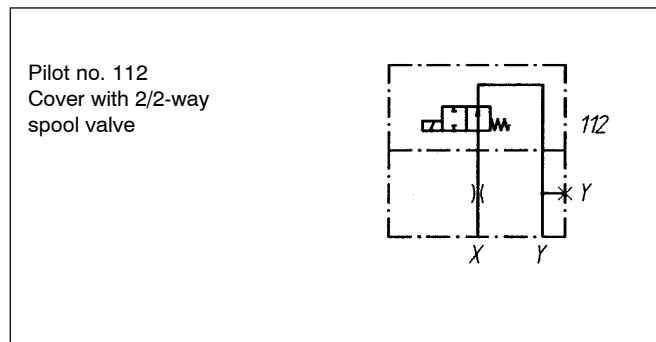
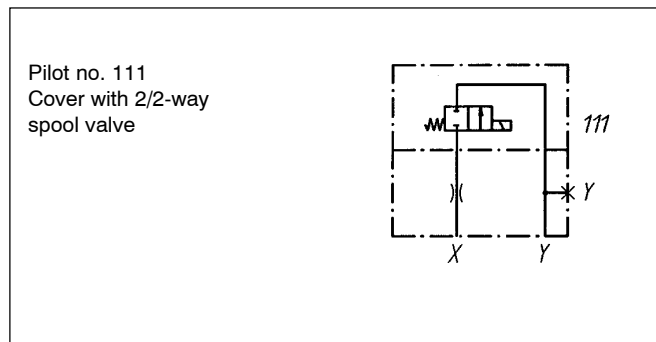


**Control cover
for directional function**

• $p_{max} = 350 \text{ bar}$

NG 40
ISO 7368
DIN 24342



GENERAL SPECIFICATIONS

Construction Control cover for directional function
 Mounting position any
 Installation dimension see dimension
 to ISO 7368 / DIN 24342
 see data sheet 2.13-1024
 Ambient temperature -20...+50°C
 Fastening torque $M_D = 370 \text{ Nm}$ (qual. 8.8) for fixing screws

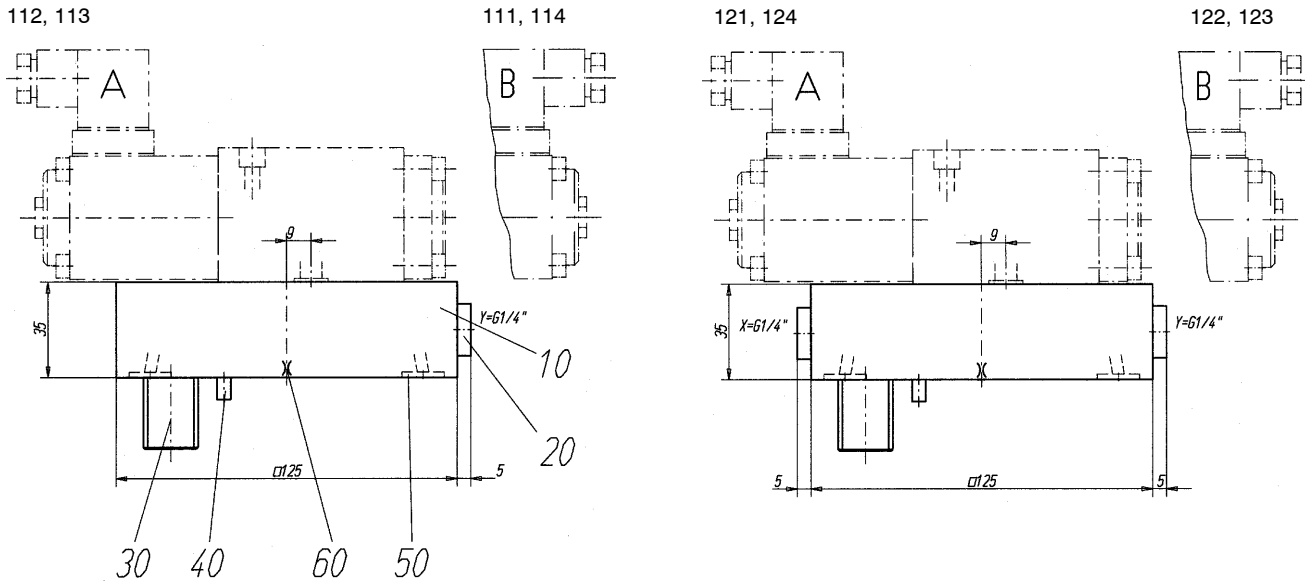
HYDRAULIC SPECIFICATIONS

Fluid Mineral oil, other fluid on request
 Contamination efficiency ISO 4406:1999, class 18/16/13
 (Required filtration grade $\beta_{6...10} \geq 75$)
 see data sheet no. 1.0-50/2
 Viskosity range 12 mm²/s bis 320 mm²/s
 Fluid temperature -20...+70°C
 Operation pressure $p_{max} = 350 \text{ bar}$

TYPE CODE

Control cover	D 40				-		/	#	
Size	40								
Pilot no.	111...124								
Solenoid type for pilot valve	Standard: 111, 112, 121, 122, 113, 114, 123, 124,				M				
					S				
Standard nominal voltage U_N	12 VDC	G12	110 VAC	R110					
	24 VDC	G24	115 VAC	R115					
			230 VAC	R230					
Orifice in cover:	0.8 mm	0.8							
	1.0 mm	1.0	usw.						
Omit if without orifice									
Design-Index (Subject to change)									

DIMENSIONS



PILOT VALVES

Pilot operated valves:	111, 122	WDMFA06-AB2	Data sheet 1.2-55
	112, 121	WDMFA06-AB1	Data sheet 1.2-55
	113	AS22061a	Data sheet 1.11-2140
	114	AS22060b	Data sheet 1.11-2140
	123	AS32060b	Data sheet 1.11-2140
	124	AS32061a	Data sheet 1.11-2140

PARTS LIST

Position	Article	Description
10	63.3018	Plate to 111, 112, 113, 114
	63.3015	Plate to other types
20	238.2406	Locking screw VSTI G1/4"
30	246.8140	Cyl. screw M20x40 DIN912
40	221.2470	Pin $\phi 5 \times 16$ DIN1481
50	160.2107	O-Ring ID 10,77x2,62
60	118.2010	Orifice M5 / 0,8 x 5
	118.2011	Orifice M5 / 0,9 x 5
	118.2012	Orifice M5 / 1,0 x 5
	118.2020	Orifice M5 / 1,2 x 5
	118.2021	Orifice M5 / 1,5 x 5